

# Hexapod 6-Axis Robot in Waveguide Device Alignment Application

Waveguide-class devices are becoming more and more popular as the metro market blossoms. Their complex functionality, parallel multichannel operation and cost-effective planar fabrication open many opportunities for systems designers, and for eventual integration into hybrid electro-optical microcircuits. Today's examples include silicon optical amplifiers (SOAs), arrayed waveguides (AWGs) and integrated optical circuits (IOCs); future uses will include on-board and even in-chip DWDM data buses.

## Challenges for Automation

Economical packaging depends on the automated alignment of fibers and V-groove arrays to the waveguide channels. Waveguides can be paradoxically simple yet complex to align:

- On the one hand, alignment of a fiber to an individual waveguide channel can closely resemble the straightforward fiber/fiber butt-coupling process most readers are familiar with.
- However, waveguide channels tend to be physically small, with characteristic dimensions as small as  $0.2\mu\text{m}$ , necessitating very high-resolution/high-stability mechanics.
- Waveguide channels are generally rectangular and usually yield a somewhat elliptical, astigmatic wavefront; this can be problematic for some alignment mechanisms.

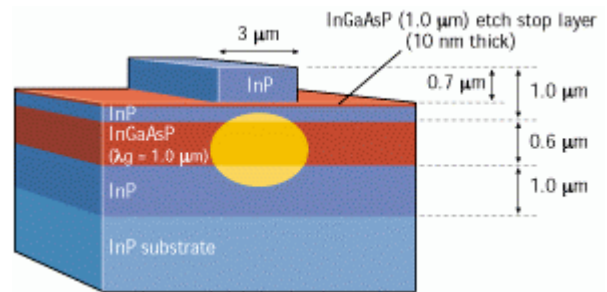
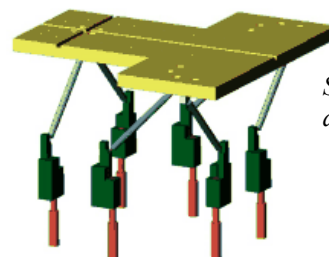


Figure 1. Today's waveguide devices are fabricated using semiconductor wafer processes. This allows sophisticated parallel optical trains to be fabricated cost-effectively. Courtesy WDM Solutions (see Footnote 1.)

- Many waveguide devices act as wavelength splitters, with mixed wavelengths at the input resulting in discrete wavelength outputs arrayed by channel. This—combined with fairly large insertion losses—can result in comparatively meager light output, which poses further challenges for some alignment methodologies.
- Angled cleaves must frequently be accommodated.
- Achieving “first light” at the input can be frustrating, as this is often a time-consuming blind process. Fixturing and device non-reproducibility often complicate this fundamental initial task.



Six Axis Alignment robot design principle

## Example Application

In this Tech Note we describe a successful implementation of two PI F-206 hexapod robots for 12-degree-of-freedom alignment of input and output fiber arrays to a multichannel silicon AWG demultiplexer—one of the most challenging devices to align. These increasingly popular devices have multiple input channels carrying photonic bitstreams in mixed wavelengths. The output channels are ordered by wavelength<sup>1</sup> as shown in Figure 2.

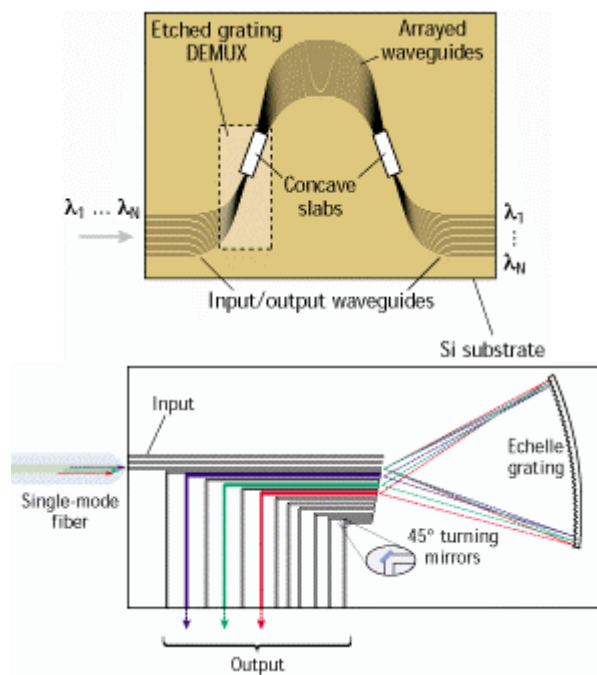
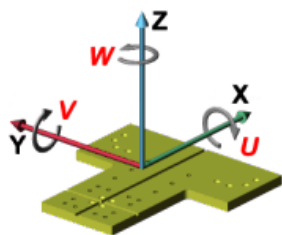


Figure 2. AWG demux and equivalent bulk-optic concept. Courtesy WDM Solutions (see Footnote 1).



The hexapod's virtual pivot point design allows rotation around any point in space

<sup>1</sup> An excellent article on devices of this type is “Etched InP waveguides speed metro WDM”, WDM Solutions, [http://wdm.pennnet.com/Articles/Article\\_Display.cfm?Section=Archives&Subsection=Display&ARTICLE\\_ID=94394](http://wdm.pennnet.com/Articles/Article_Display.cfm?Section=Archives&Subsection=Display&ARTICLE_ID=94394)

## Setup

Two F-206s were mounted on an isolation table (see Figure 4). Initially the output of the Si AWG could be imaged by an IR camera to facilitate first-light acquisition. A downward-looking camera is mounted on two PI M-500 stages for viewing the gaps, etc. These stages are controlled by one of the F-206 controllers. The 0<sup>th</sup> and N<sup>th</sup> channel fibers from the output array were connected to one F-206's power meter cards. The output of the photoamplifier was connected in parallel to both F-206s' A/D inputs.

A LabVIEW program was constructed to sequence the two microrobots for six-degree-of-freedom alignment of both sides of the AWG. A serpentine seek routine for the two microrobots was programmed to automatically capture first-light at the input, eliminating the need for the back-end IR camera. Fine-alignment commands were then issued to automatically optimize the coupling of the input and output fiber arrays.

The following graphs show the repeatability of the transverse alignment of the single-mode fiber silicon V-groove arrays to the waveguides. Due to the thermally-induced spectral instability of the broadband source (an erbium-doped-fiber laser with only the aggregate integrated power—not the spectrum—stabilized by closed loop) we statistically removed any monotonic trend observed from variation of the source; both the raw and processed data is plotted. The units are Volts and represent the terminal value of each run's optical coupling as viewed by the two F-206s' power meter cards. The repeatability results were then presented several ways: (1) the raw plot, (2) a bar-graph showing the de-trended value of each run, (3) a histogram, (4) an XY plot of the terminal position, (5) mean, standard deviation and variance values.

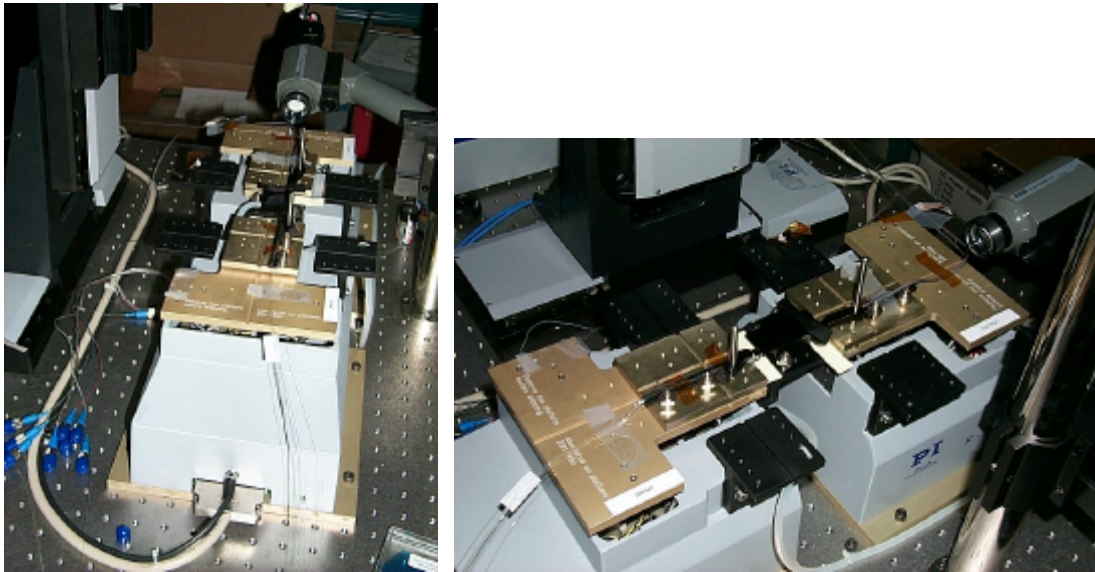


Figure 3. The AWG alignment setup. An IR imager with CCD was used to find first-light. The I/O fiber arrays were each mounted on their own F-206 hexapod robot. A PI vacuum chuck for the waveguide was mounted on one F-206's stationary front bracket; the other F-206's bracket was removed; this made for an especially compact assembly.

One F-206 hexapod controller was used with an XZ assembly of M-500 stages to position a CCD camera above the assembly to facilitate visual alignments.

## Results

Of the many alternatives available in the F-206's "toolkit", we selected the FSA algorithm for the very demanding alignment of the quasi-Gaussian couplings to these waveguide. The results (Figure 4-Figure 7) were exceptional:

- Typical transverse alignment time less than 5 seconds from a  $\sim 200\mu\text{m}$  initial offset.
- $\sim 0.1\text{dB}$  transverse alignment repeatability, virtually identical to or even better than a steady-state test with no alignments (see Figure 7)
- Terminal positions clustered typically within  $\pm 0.1\mu\text{m}$ .

Note: alignment results are highly dependent on device coupling characteristics. Results will vary by application.

The superb performance of the F-206 in the very demanding transverse alignment for these

devices allows the fully-integrated system to achieve 0.2dB consistency for the full 12-degree-of-freedom production process:

- A video approach was chosen to achieve the desired  $10\mu\text{m}$  Z separation between the fiber array V-groove assembly and the waveguide input and output faces. The F-206s' capability for placing the centerpoint of its optical axes anywhere in space via a single software command is leveraged here by placing the pivot point on the optical axis of the 0<sup>th</sup> array channel.
- $\theta_z$  alignment (that is, adjustment of the I/O arrays' roll angles to bring all fiber channels into alignment with the waveguide channels) is achieved by the F-206's FAA (fast angle alignment) command.
- $\theta_y$  and  $\theta_x$  are readily optimized via the FAM (fast angle scan to maximum) and AAP (automated gradient search) commands.

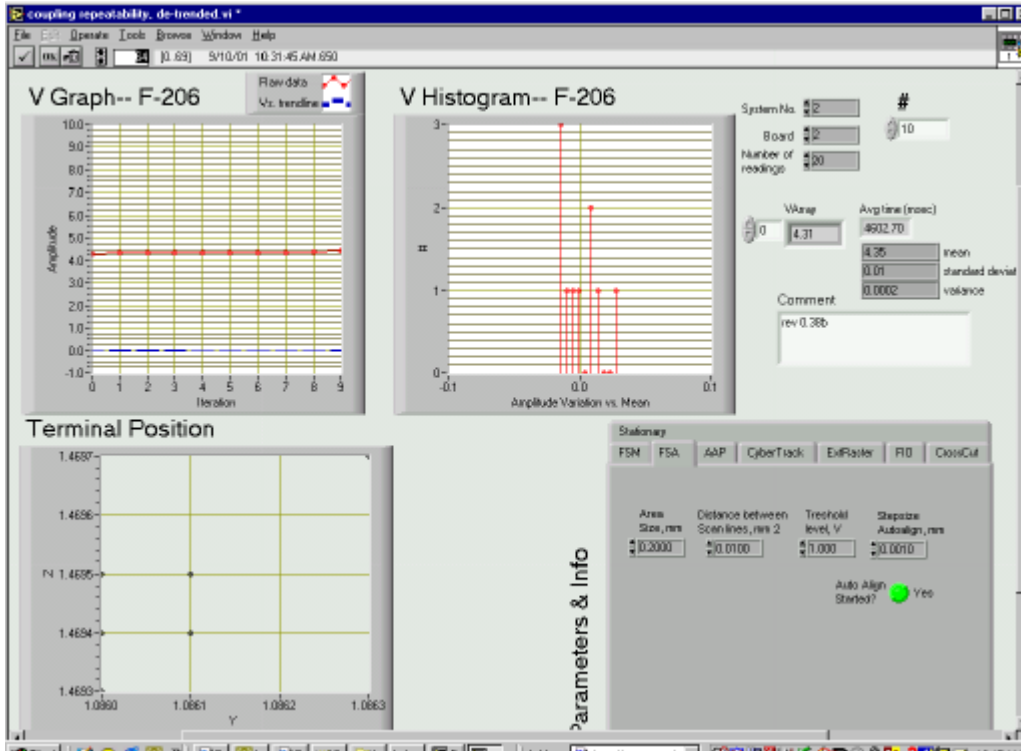


Figure 4. Statistical analysis of ten successive dealignment/realignment operations.

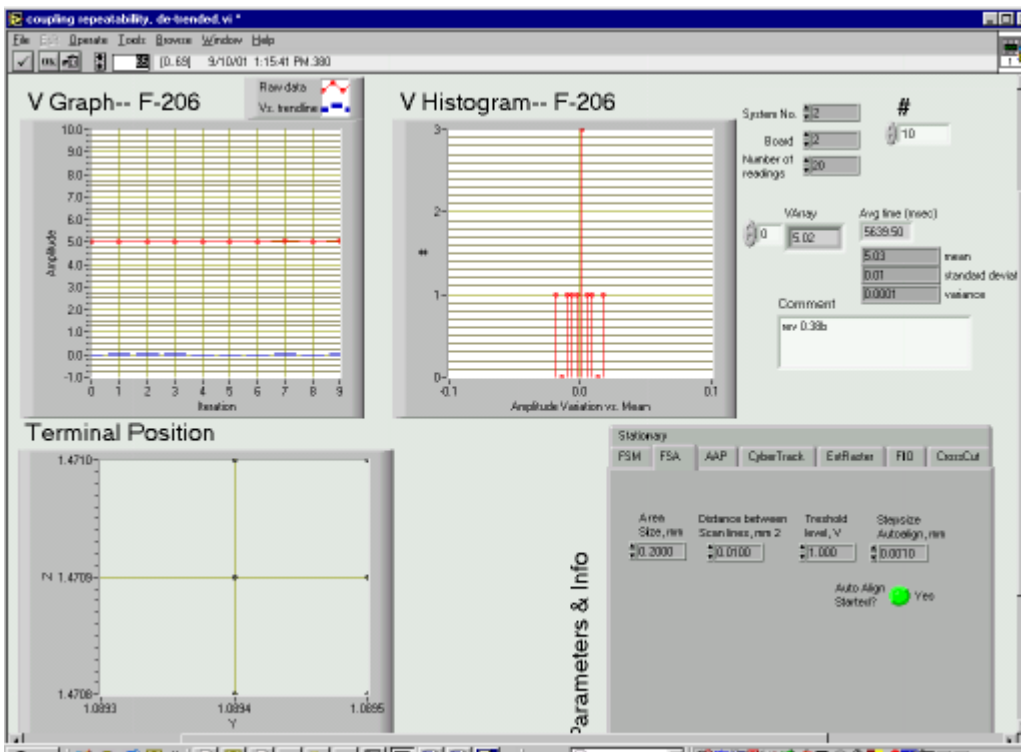


Figure 5. Same test.

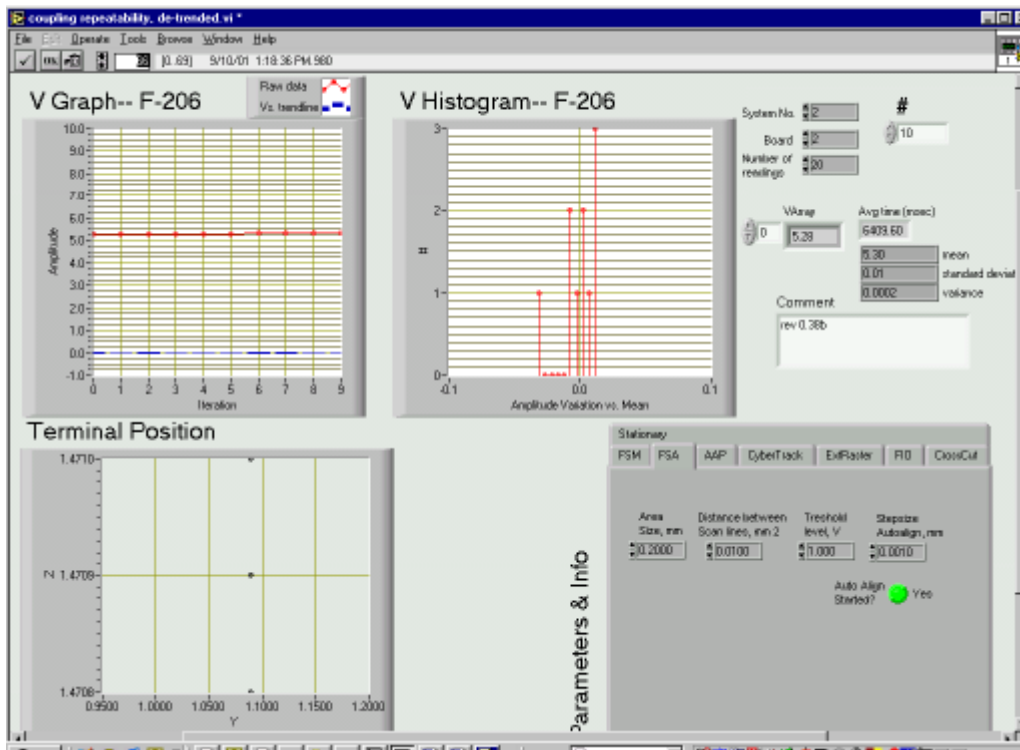


Figure 6. Same test.

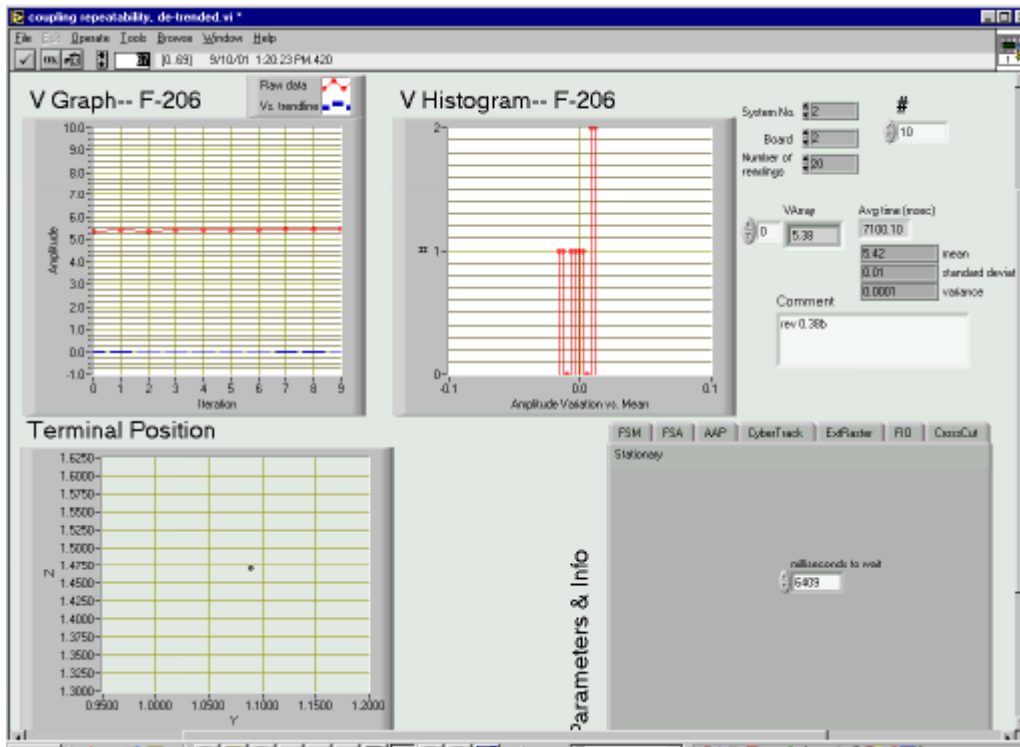


Figure 7. Same test with no realignment at all-- just dwell (approximating the ~4.5 alignment time observed in Figure 4- Figure 6), followed by data collection.

**Photonics Production Microrobotics:  
A Coming of Age**

Vj ku'cr r rlecvkqp'tgr t gupw'vj g'eqpxgti gpeg'qh ugo keqpf wevtu'cpf 'rj qvqpleu'lp'o qtg'y c { u vj cp'qpg0'O quv'qdxkqun{ . 'vj g'ukrleqp'CY I 'ku'c rkj qi tcr j kecm{/r tqf wegf 'r cwgtp'ko r tkpvgf "en masse"qp'c'ukpi ng'y chgt. "vj gp'f keg'f d{ 'vj g f q l g pu0'Dw'vj gtg'ku'cpqj gt. 'nguu'gxkf gpv r ctengn'vj g'cf xgpv'qh'c'paxgn'r tqf wevkqp'tqdqv eqphki wtcvkqp'y j lej 'cf f tguugu'wpls wg ej ctcevtgkunkeu'qh'vj g'lpf wut { au'cr r rlecvkqu0

Vj g'uetkr vku'tgo kpluegpv'qh'vj kv{ '{ gctu'ci q. 'y j gp vj g'htuv'y chgt/j cpf rki 'tqdqv'y gtg'lpvtqf wegf 'lp vj g'ugo keqpf wevt'lpf wut { 0'Cctn{ 'j cpf rgtu'y gtg ucem'qh'ikpgct'ukf gu'y j lej 'uj wwgf 'y chgtu'ltqo ucvkqp'v'ucvkqp'lp'r tqegui'vqnu0'C'tcf kecn f gr ctwtg'qeewtgf 'lp'vj g'3; : 2u'y kj 'vj g'htuv'o wnk rkn'y chgt/j cpf rgt'v'q'v'vj g'ug'wugf 'eqqtf lpcvgf eqwvgt/tqcvkpi 'czgu'v'q'hrf 'cpf 'wp/hrf 'cto u i kxkpi 'vj g'tqdqv'hrf 'tgcej 'y kj 'c'b' qtg'eqo r cev hqqr tkp'vj cp'y cu'r quukdr'g'y kj 'ucengf 'hpgct eqphki wtcvkqu0'Engcp'rkpguu'cpf 'ur ggf 'y gtg uki p'k'ecpv'dgpg'ku'cu'vj g'g'zr qugf . 'r ctveng/ r tqf wekpi 'dgctkpi u'cpf 'u'w'ucpv'k'c'ib' qxkpi 'b' cuugu qh'vj g'ucengf 'c'r r tqcej 'y gtg'grko lpcvgf 0'Ukm'vj g pgy 'eqphki wtcvkqp'y cu'q'w'w'epf'kuj . 'cpf 'vj g pgeguct { 'eqpv'qnu'y gtg'o qtg'eqo r rnz0'K'y cu'c hgy '{ gctu'dgh'q'g'k'y cu'ceegr v'f 'd{ 'v'q'q'ng'pi kpggtu0 Vqf c{ o y kj 'vj g'lpf wut { 'y g'nic'rupi 'lp'ku'hrf / v'gto 'lp'k'c'v'k'g'v'lo r tqxg'f 'lgr'f 'd{ 'grko lpcvkpi o cpwcn'j cpf rki 'qh'y chgtu0 vj g'ug'tqdqv'ctg'vj g pqto 0

C'uko kct'gxq'w'k'qp'ku'r r'c'kpi 'q'w'lp'r'j qvqpleu r tqegu'cwqo cvkqp0'Vj g'htuv'r tqf wevkqp/y qtj { crki po gpv'u'wdu{ ugo u0 uwej 'cu'vj g'g'ct'rk'g'v'f'ki kcn' i tcf k'p'v'ugctej 'w'p'ku'lpvtqf wegf 'd{ 'vj g'cwj qt'o qtg vj cp'c'f gecf g'ci q'cpf 'u'w'nl'r'qr wct0 y gtg'ucem'qh qh'vj g'uj g'nh'p'gct'uci gu'0'O cp{ 'eqo r g'k'q'v'p'qy qh'gt'uko kct'r tqf wev'0'k'3; ; 9.'j qy gxgt. 'vj g'htuv j g'zcr qf /dcugf 'rj qvqpleu'o letqtdqv'y cu lpvtqf wegf <Rku'H4280'F tkxgp'd{ 'vj g'r'j qvqpleu lpf wut { au'qy p'f 'lgr'f 'lo r tqxgo gpv'lp'k'c'v'k'g'o lp ku'ecug. 'v'g'grko lpcvg'o cpwcn'crki po gpv

r tqeguugu0 vj ku'paxgn'leqphki wtcvkqp'cf f tguugf go gti kpi 'pggf u'lp'eng'f kpi <

- K'p'et'g'cukpi 'f gxleg'eqo r rnzkv
- Dwti gqpkpi 'pggf u'hrq'cpi wrct'cu'y g'nic' u'cpuxgtug'crki po gpv
- Vj g'pggf 'v'k'p'w'c'p'v'f 'r r'ceg'vj g'r'j { u'kecn tqcvkqp'egpvt/r q'k'p'v'c'v'ur gek'le'qr v'kecn r q'k'p'w'hu'qo g'y kpi 'p'q'v'r quukdr'g'y kj o gej cp'kecn't'q'vct { 'dgctkpi u+
- Ko r tqxgf 'r tqegu'vj tqwi j r w'vj tqwi j grko lpcvkqp'qh'o qtg'vj cp'; 2' 'qh'vj g o qxkpi 'o cuu'qh'leqpxgpv'k'p'c'n'ucengf c'r r tqcej gu0

Chgt'dtgc'nj tqwi j 'f gr'q'f'o gpv'cu'cp'0'g'p'c'd'rk'pi v'ej p'q'q'i { o'k'p'ugx'g'c'n'q'v'j gty kug'lpvt'ce'v'c'd'rg O GO U. 'F Y F O 'cpf 'y cxgi w'k'f'g'c'r r rlecvkqu. vj g'j' g'zcr qf 'r tkp'ek'ng'y cu'v'q'p'r' tqxgp'v'q'vj g r q'k'p'v'j cv'k'v'j cu'd'ge'qo g'o c'k'p'w'g'c'o 0'U'qo g eqo r cp'k'g'u'j cxg'f'q' l g'pu'q'h'vj g'ug'w'p'ku'qr g'c'v'k'pi ukf g/d { /ukf g. 'qr g'c'v'k'pi '46z9. 'cpf 'vj g'w'p'k'ku'lp ku'h'k'h'j '{ gct'qh'x'q'w'o g'r tqf wevkqp0



Figure 8. The 6-axis parallel-kinematic robot follows in the tradition of the multilink wafer-handling robot: once novel, now mainstream. Photo courtesy Equipe/PRI Automation.

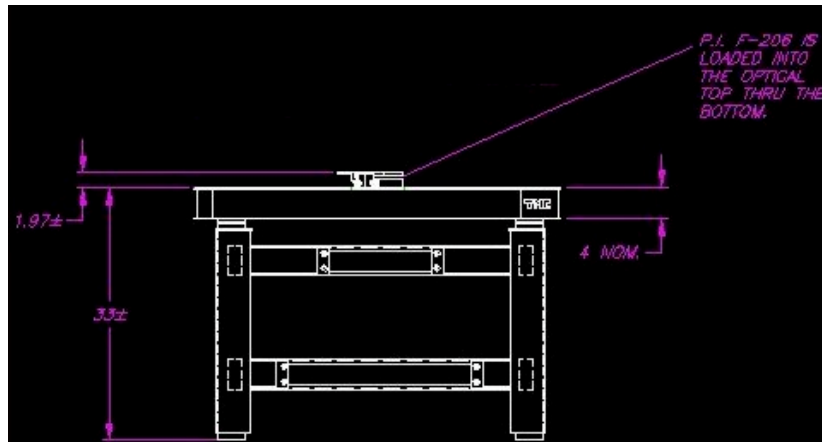


Figure 9. Integrators may be interested in inserting the F-206s into a TMC isolation table. This improves ergonomics, vibrational stability and thermal stability.

### Conclusion

The F-206 microrobot has proven to be an ideal platform for this and other waveguide applications due to its:

- High precision
- Six-axis functionality
- Freely software-settable rotational pivot point
- Integrated high-speed metrology
- Compact footprint
- Broad suite of fully-integrated, high-speed automated-alignment routines
- Comprehensive, industrial-class supporting software, including LabVIEW libraries, and COM-compliant 32-bit DLLs.

In this application success story, all of the F-206 hexapods attributes were leveraged, resulting in a fast production alignment workstation with alignment repeatable to 0.1dB for the devices' especially demanding transverse alignments and 0.2dB for the full 12-degree-of-freedom application.

More information on hexapods at <http://www.hexapods.net>